

Welcome

COMPLEX CARE, MADE SIMPLE

Our philosophy of care is centred on each person's need, focused on enhancing independence, offering choice, and ensuring personal wellness. We work corroboratively with residents, medical professionals, and family members and loved ones to provide each resident's highest quality of life.

Our skilled and compassionate nurses, care aides, recreation teams, chefs, and hospitality staff work together to promote residents' health and well-being.

Life at The Waterford is active and vibrant—music, fitness, art, dance, and laughter make each day unique.

OUR RATES

\$250 p/day for 24-hour licensed nursing care.

Pro-rated to \$7500p/month.

Double occupancy available. Residents living in our deluxe suites pay an additional monthly supplement.

LICENSED UNDER THE COMMUNITY CARE AND ASSISTED LIVING ACT

The Waterford Care Centre is committed to excellence in care and service and receives regular monitoring and inspection to document that the adult care regulations are met according to the Community Care and Assisted Living Act. These standards include care excellence, cleanliness, food quality, building and furniture condition, and effective documentation.



The
WATERFORD

Care Centre

1345 56 Street
Delta, BC V4L 2P9

.....

604.943.5954

WaterfordForSeniors.net



Features

A LEADER IN SENIOR CARE SINCE 2001



The
WATERFORD

Care Centre

1345 56 Street
Delta, BC V4L 2P9

.....

604.943.5954
WaterfordForSeniors.net

BRIACARE™

- 24-hour care by RNs, LPNs and certified care aides
- Access to a house physician
- Pharmacist led medication management in coordination with attending physician
- Assistance with daily living activities (e.g. dressing, hygiene, mobility)
- Professional foot care
- Regular nutritional assessment by a registered dietitian
- Physiotherapist on-site twice a month
- Weekly visit with a rehab assistant

BRIAFIT™

- Music therapy programs
- Fitness Classes
- Live entertainment
- Theme parties and seasonal festivities
- Arts and crafts
- Gardening
- Bingo
- Neighbourhood outings on foot and in the Bria Bus

BRIACUISINE™

- Meals prepared in house by our Red Seal Chef and his team
- All meals as well as daily snacks and treats
- Mouth-watering feasts for seasonal celebrations and special occasions.

BRIASAFE™

- Nurse call system in each suite
- Personal emergency monitoring system attended by nursing staff 24/7
- Wander and memory care management

BRIACONSIERGE™

- Laundry service
- Housekeeping service
- On-site room maintenance
- Shaw cable with 200+ channels
- On-site hair dressing salon*
- On-site dental services*
- Secure, personal phone line with long distance plan: \$41.95/month (tax included.)
- Wifi service: \$25/month

*Costs not included in daily rate.



Sample Suite

SUITES THAT SUIT YOU

Each suite includes a picture window, private accessible washroom, electric adjustable bed and standard safety features. Residents are welcome to furnish suites with their favourite items from home.



The
WATERFORD

Care Centre

1345 56 Street
Delta, BC V4L 2P9

.....

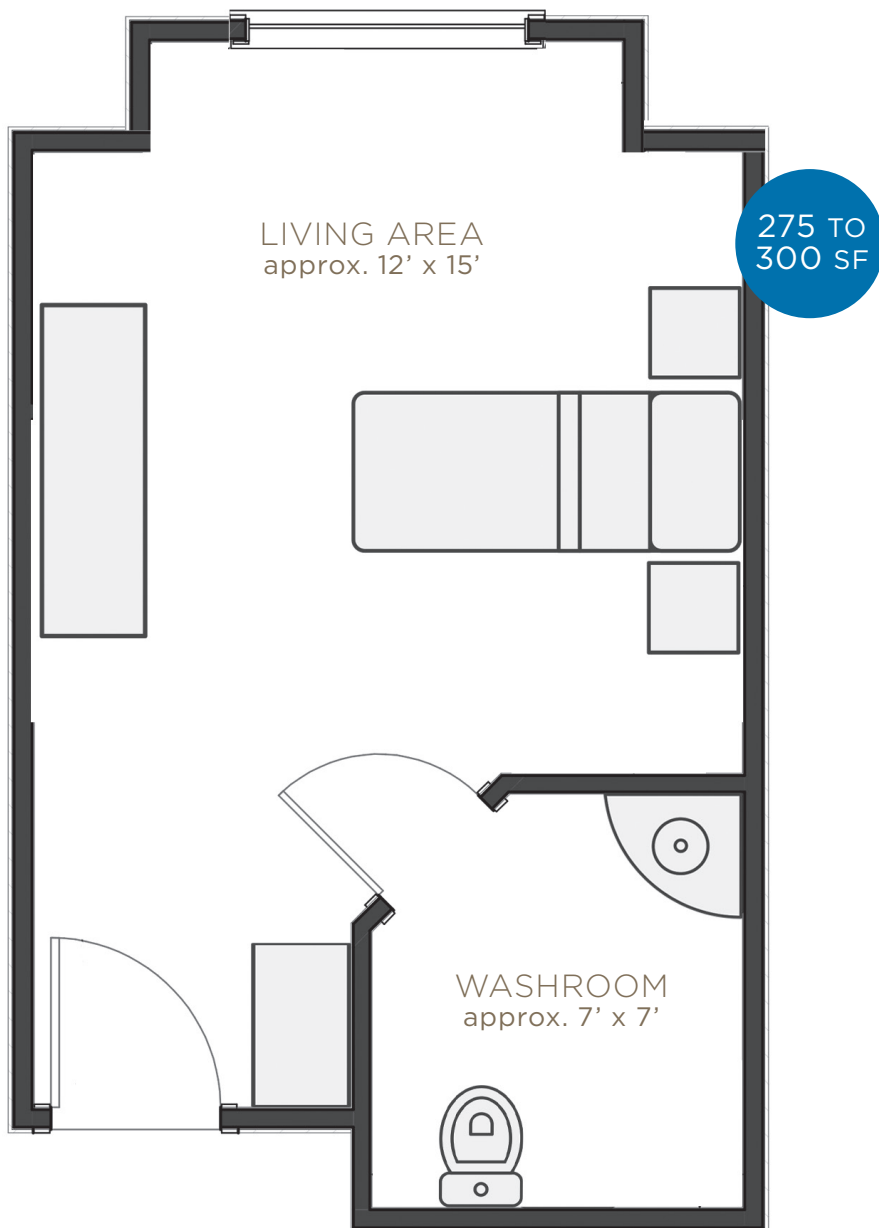
604.943.5954
WaterfordForSeniors.net



Sample Floor Plan

SUITES THAT SUIT YOU

Our suites are comfortable and private, with 275 to 300 SF of living space that can be personalized with your furniture, artwork and photos.



The
WATERFORD

Care Centre

1345 56 Street
Delta, BC V4L 2P9

.....

604.943.5954
WaterfordForSeniors.net





The
WATERFORD

Care Centre

.....

1345 56 Street

Tsawwassen, BC V4L 2P9

604.943.5954

.....

www.WaterfordForSeniors.net



— Get to know your neighbours™

Inquiry Form



The
WATERFORD
Care Centre

1345 56 Street
Delta, BC V4L 2P9
.....

604.943.5954
WaterfordForSeniors.net

Today's Date: _____

PRIMARY CONTACT

Name: _____

Relationship to Prospective Resident: _____

Phone: _____ Mobile: _____

Email: _____

PROSPECTIVE RESIDENT

Name: _____

Address: _____

City: _____ Postal Code: _____

Phone: _____ Mobile: _____

Age: _____ Date of Birth: _____

HEALTH ASSESSMENT

Current Living Situation: _____

Care Needs: _____

Physical or mental health conditions that are being managed/
treated by a physician/health professional _____

Mobility (Use of walker/wheelchair dependent or
independently: _____

Preferred Move Date: _____

Is there a current/known history of angry or aggressive behaviour?

☐ Yes ☐ No

Is there a current/known history of wandering?

☐ Yes ☐ No

Are there any other concerns we should be aware of?

☐ Yes ☐ No _____

