

# Welcome

---

## COMPLEX CARE, MADE SIMPLE

Our philosophy of care is centred on each person's need, focused on enhancing independence, offering choice, and ensuring personal wellness. We work corroboratively with residents, medical professionals, and family members and loved ones to provide each resident's highest quality of life.

Our skilled and compassionate nurses, care aides, recreation teams, chefs, and hospitality staff work together to promote residents' health and well-being.

Life at The Waterford is active and vibrant—music, fitness, art, dance, and laughter make each day unique.



*The*  
**WATERFORD**

Care Centre

1345 56 Street  
Delta, BC V4L 2P9

.....

**604.943.5954**

[WaterfordSeniors.net](http://WaterfordSeniors.net)

---

### **LICENSED UNDER THE COMMUNITY CARE AND ASSISTED LIVING ACT**

The Waterford Care Centre is committed to excellence in care and service and receives regular monitoring and inspection to document that the adult care regulations are met according to the Community Care and Assisted Living Act. These standards include care excellence, cleanliness, food quality, building and furniture condition, and effective documentation.



# Features

A LEADER IN SENIOR CARE SINCE 2001



*The*  
**WATERFORD**

Care Centre

1345 56 Street  
Delta, BC V4L 2P9

.....

**604.943.5954**

[WaterfordSeniors.net](http://WaterfordSeniors.net)

## **BRIACARE™**

- 24-hour care by RNs, LPNs and certified care aides
- Access to a house physician
- Pharmacist led medication management in coordination with attending physician
- Assistance with daily living activities (e.g. dressing, hygiene, mobility)
- Professional foot care
- Regular nutritional assessment by a registered dietitian
- Physiotherapist on-site twice a month
- Weekly visit with a rehab assistant

## **BRIAFIT™**

- Music therapy programs
- Fitness Classes
- Live entertainment
- Theme parties and seasonal festivities
- Arts and crafts
- Gardening
- Bingo
- Neighbourhood outings on foot and in the Bria Bus

## **BRIACUISINE™**

- Meals prepared in house by our Red Seal Chef and his team
- All meals as well as daily snacks and treats
- Mouth-watering feasts for seasonal celebrations and special occasions.

## **BRIASAFE™**

- Nurse call system in each suite
- Personal emergency monitoring system attended by nursing staff 24/7
- Wander and memory care management

## **BRIACONSIERGE™**

- Laundry service
- Housekeeping service
- On-site room maintenance
- Shaw cable with 200+ channels
- On-site hair dressing salon\*
- On-site dental services\*
- Secure, personal phone line with long distance plan: \$41.95/month (tax included.)
- Wifi service: \$25/month

\*Costs not included in daily rate.



# Sample Suite

SUITES THAT SUIT YOU

Each suite includes a picture window, private accessible washroom, electric adjustable bed and standard safety features. Residents are welcome to furnish suites with their favourite items from home.



*The*  
**WATERFORD**

Care Centre

1345 56 Street  
Delta, BC V4L 2P9

.....

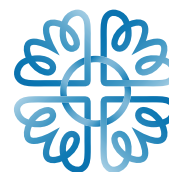
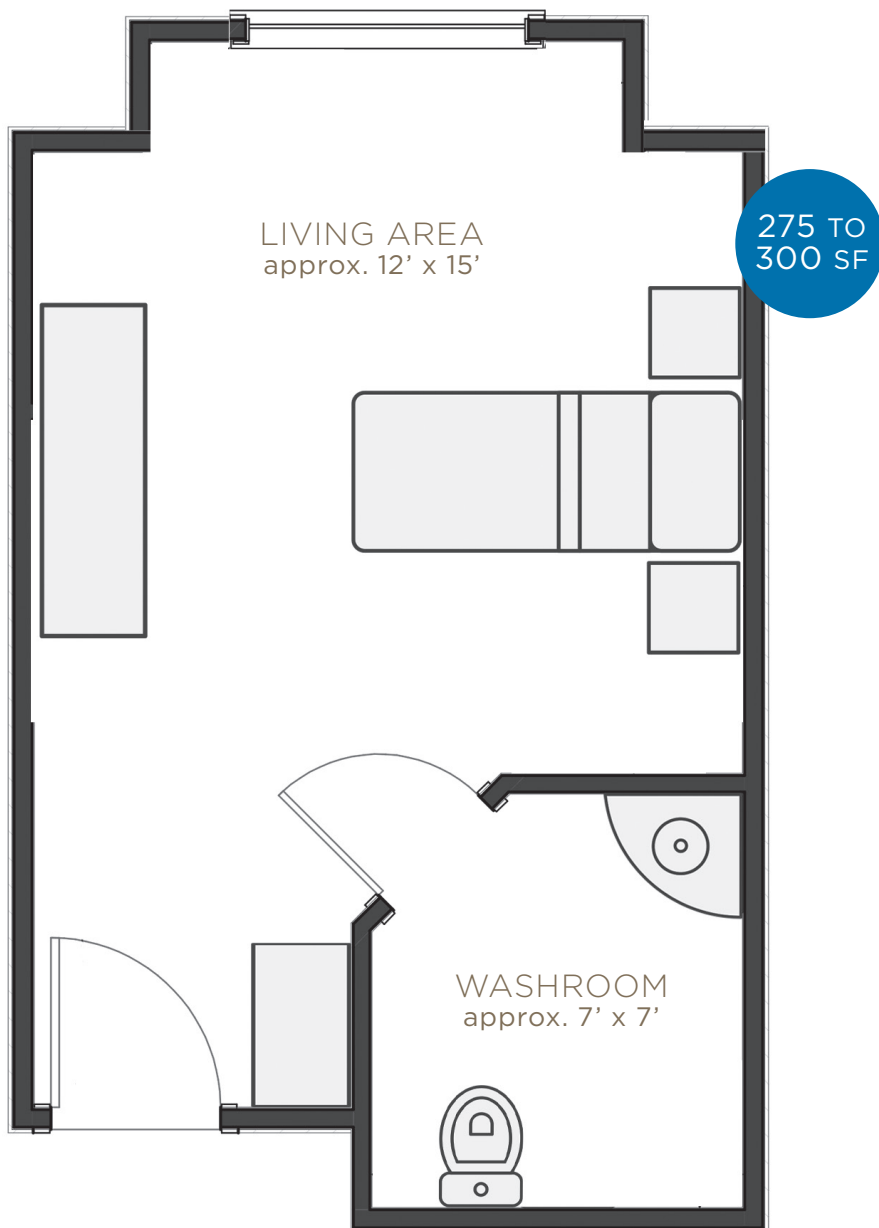
**604.943.5954**  
WaterfordSeniors.net



# Sample Floor Plan

## SUITES THAT SUIT YOU

Our suites are comfortable and private, with 275 to 300 SF of living space that can be personalized with your furniture, artwork and photos.



*The*  
**WATERFORD**

Care Centre

1345 56 Street  
Delta, BC V4L 2P9

.....

**604.943.5954**  
WaterfordSeniors.net





*The*  
**WATERFORD**

**Care Centre**

.....

1345 56 Street

Tsawwassen, BC V4L 2P9

604.943.5954

.....

[www.WaterfordForSeniors.net](http://www.WaterfordForSeniors.net)



— Get to know your neighbours™

# Inquiry Form

---



*The*  
**WATERFORD**  
Care Centre

1345 56 Street  
Delta, BC V4L 2P9  
.....  
**604.943.5954**  
WaterfordSeniors.net

Today's Date: \_\_\_\_\_

## PRIMARY CONTACT

Name: \_\_\_\_\_  
Relationship to Prospective Resident: \_\_\_\_\_  
Phone: \_\_\_\_\_ Mobile: \_\_\_\_\_  
Email: \_\_\_\_\_

## PROSPECTIVE RESIDENT

Name: \_\_\_\_\_  
Address: \_\_\_\_\_  
City: \_\_\_\_\_ Postal Code: \_\_\_\_\_  
Phone: \_\_\_\_\_ Mobile: \_\_\_\_\_  
Age: \_\_\_\_\_ Date of Birth: \_\_\_\_\_

## HEALTH ASSESSMENT

Current Living Situation: \_\_\_\_\_  
Care Needs: \_\_\_\_\_

Physical or mental health conditions that are being managed/  
treated by a physician/health professional \_\_\_\_\_

Mobility (Use of walker/wheelchair dependent or  
independently: \_\_\_\_\_

Preferred Move Date: \_\_\_\_\_

Is there a current/known history of angry or aggressive behaviour?

☐ Yes ☐ No

Is there a current/known history of wandering?

☐ Yes ☐ No

Are there any other concerns we should be aware of?

☐ Yes ☐ No \_\_\_\_\_

