

# Welcome

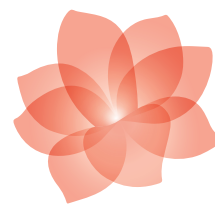
---

## COMPLEX CARE, MADE SIMPLE

Our BriaCare philosophy of care is centred on each person's unique needs, focusing on enhancing independence, offering choice, and ensuring personal wellness. We work collaboratively with residents, medical professionals, family members and loved ones to provide each resident with the highest quality of life.

Our skilled and compassionate nurses, care aides, recreation teams, chefs, and hospitality staff work together to promote residents' health and well-being.

Life at Magnolia Gardens is active and vibrant—music, fitness, art, and laughter make each day unique.



**MAGNOLIA  
GARDENS**

---

### Care Centre

5840 Glover Road  
Langley, BC V3A 9K3  
604.514.1210  
.....

[MagnoliaSeniors.ca](http://MagnoliaSeniors.ca)

Razel Sievert RN  
*Resident Care Manager*

---

### **LICENSED UNDER THE COMMUNITY CARE AND ASSISTED LIVING ACT**

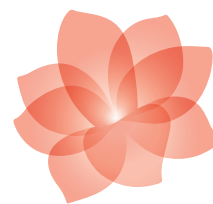
Magnolia Gardens Care Centre is committed to excellence in care and service and receives regular monitoring and inspection to document that the adult care regulations are met according to the Community Care and Assisted Living Act. These standards include care excellence, cleanliness, food quality, building and furniture condition, and effective documentation.



# Features

---

A LEADER IN SENIORS' CARE SINCE 2001



**MAGNOLIA  
GARDENS**

---

## Care Centre

5840 Glover Road  
Langley, BC V3A 9K3  
604.514.1210  
.....  
MagnoliaSeniors.ca

Razel Sievert RN  
*Resident Care Manager*

## BRIACARE

- 24-hour care by RNs, LPNs and certified Care Aides
- Access to a house physician
- Pharmacist led medication management in coordination with attending physician
- Assistance with daily living activities (e.g. dressing, hygiene, mobility)
- Regular nutritional assessment by a registered dietitian
- Physiotherapist on-site weekly

## BRIACUISINE

- Meals prepared in house by our Red Seal Chef and BriaCuisine teams
- All meals as well as daily snacks and treats

## BRIAHOSPITALITY

- Laundry service
- Housekeeping service
- On-site room maintenance
- Shaw cable with 200+ channels

## BRIALIFE

- Fitness Classes
- Live entertainment
- Music therapy programs
- Games and activities
- Arts and crafts
- Gardening
- Bingo
- Outings in the Bria Bus

## BRIASAFE

- Nurse call system in each suite
- Emergency monitoring system attended by nursing staff 24/7
- Wander and memory care management

## ALSO AVAILABLE

Costs not included in monthly rate.

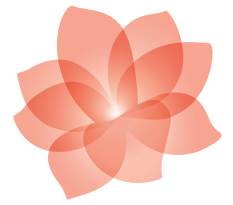
- Secure, personal phone line with long distance plan: \$41.95/month (tax included.)
- Wifi service for light browsing: \$25.25/month (tax included.)
- On-site hair dressing salon
- On-site foot care
- On-site dental services



# Sample Suite

A SUITE THAT SUITS YOU

Each suite includes a picture window, private accessible washroom, electric adjustable bed and standard safety features. Residents are welcome to furnish suites with their favourite items from home.



**MAGNOLIA  
GARDENS**

**Care Centre**

5840 Glover Road  
Langley, BC V3A 9K3  
604.514.1210  
.....  
MagnoliaSeniors.ca

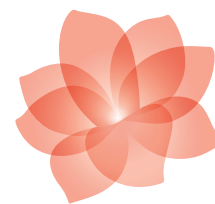
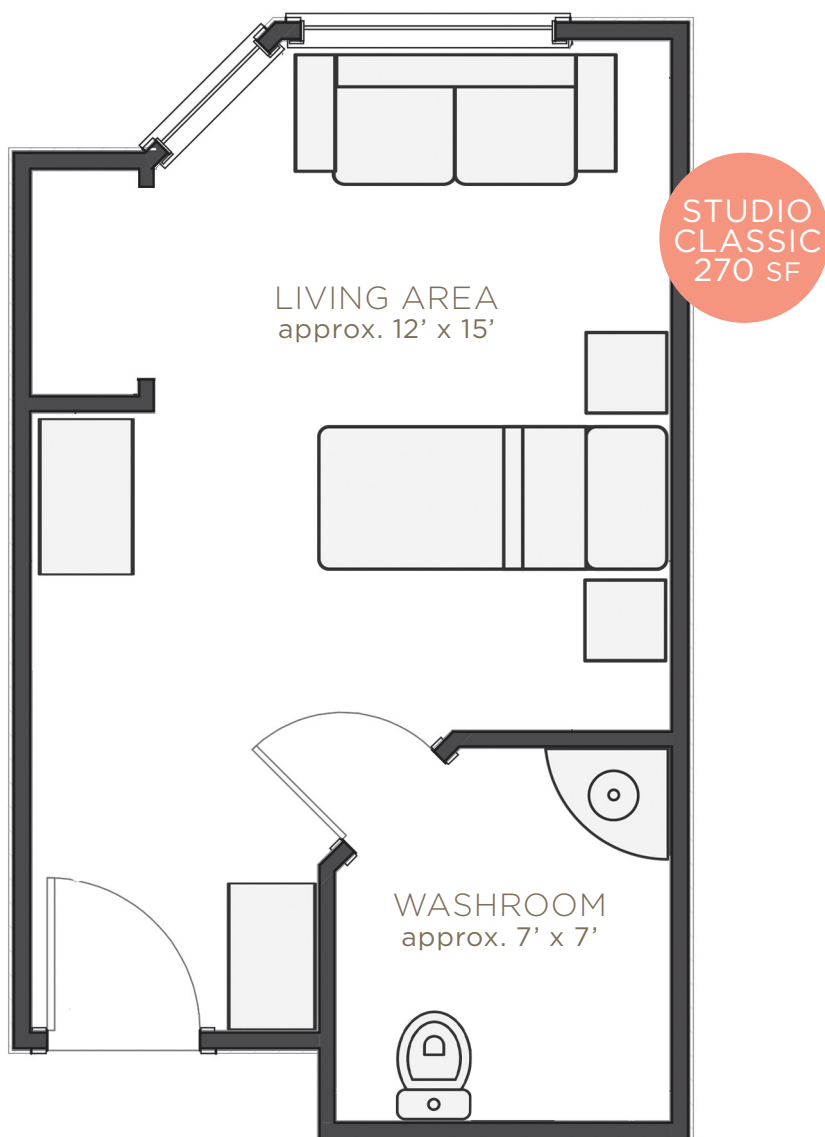
Razel Sievert RN  
*Resident Care Manager*



# Sample Floor Plan

## A COMFORTABLE PLAN

Our suites are comfortable and private, with 270 to 340 SF of living space that can be personalized with your furniture, artwork and photos. Pictured here is a Studio Classic suite which is 274 SF.



**MAGNOLIA  
GARDENS**

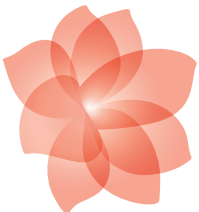
### Care Centre

5840 Glover Road  
Langley, BC V3A 9K3  
604.514.1210  
.....

[MagnoliaSeniors.ca](http://MagnoliaSeniors.ca)

Razel Sievert RN  
*Resident Care Manager*





# MAGNOLIA GARDENS

## Care Centre

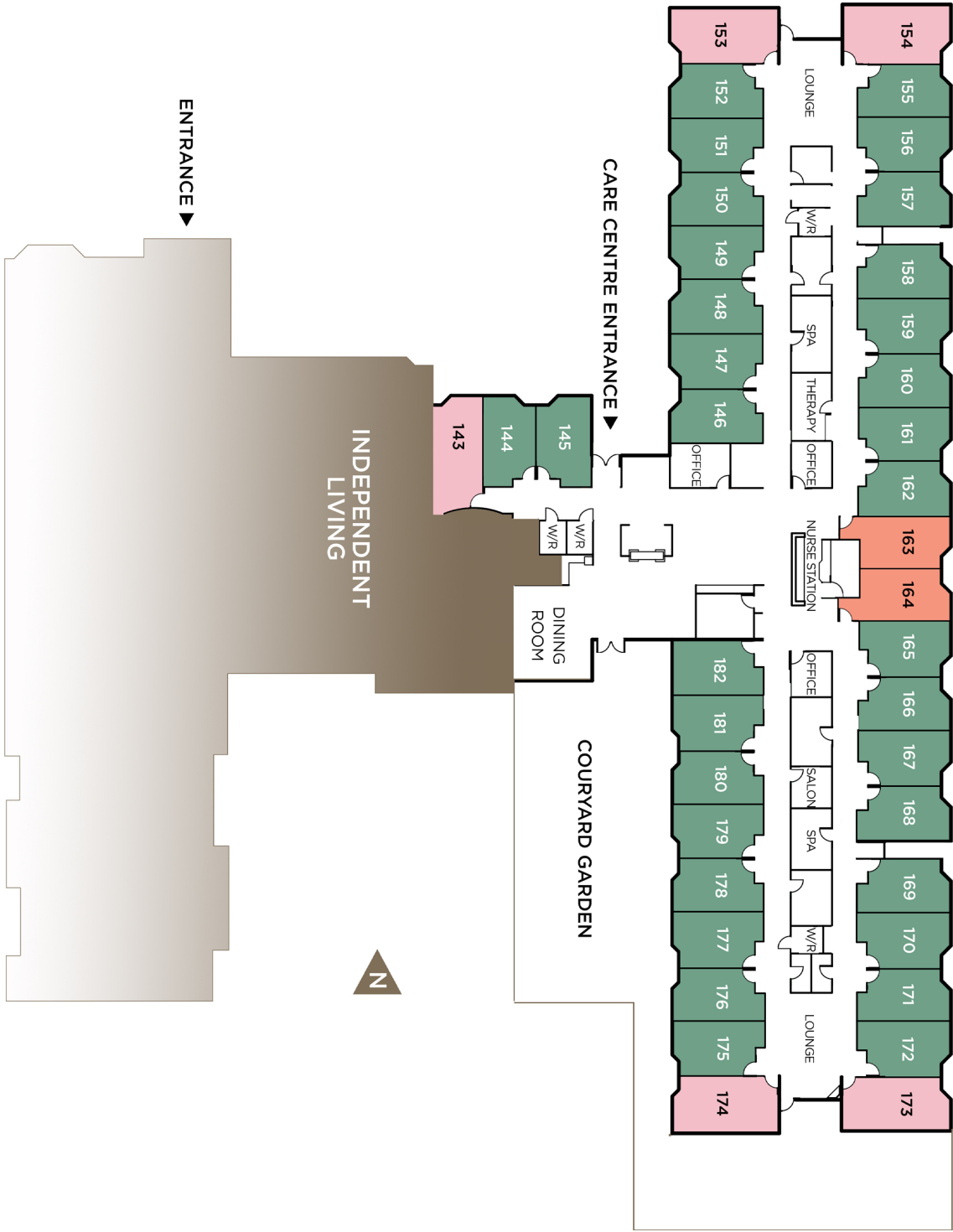
5840 Glover Road  
Langley, BC V3A 9K3

604.514.1210

\*\*\*\*\*

MagnoliaSeniors.ca

Razel Sievert RN  
Resident Care Manager



APPLEWOOD  
Studio Classic  
274 SF

ELMWOOD  
Studio Plus\*  
311 SF

HAZELWOOD  
Studio Select\*  
339-357 SF

\*Additional Monthly Suite Size Premium



RETIREMENT. LIVING!

# Inquiry Form

---



**MAGNOLIA  
GARDENS**

**Care Centre**

5840 Glover Road  
Langley, BC V3A 9K3  
604.514.1210  
.....

MagnoliaSeniors.ca

Razel Sievert RN  
Resident Care Manager

Today's Date: \_\_\_\_\_

## PRIMARY CONTACT

Name: \_\_\_\_\_

Relationship to Prospective Resident: \_\_\_\_\_

Phone: \_\_\_\_\_ Mobile: \_\_\_\_\_

Email: \_\_\_\_\_

## PROSPECTIVE RESIDENT

Name: \_\_\_\_\_

Address: \_\_\_\_\_

City: \_\_\_\_\_ Postal Code: \_\_\_\_\_

Phone: \_\_\_\_\_ Mobile: \_\_\_\_\_

Age: \_\_\_\_\_ Date of Birth: \_\_\_\_\_

## HEALTH ASSESSMENT

Current Living Situation: \_\_\_\_\_

Care Needs: \_\_\_\_\_

Physical or mental health conditions that are being managed/  
treated by a physician/health professional \_\_\_\_\_

Mobility (Use of walker/wheelchair dependent or  
independently: \_\_\_\_\_

Preferred Move Date: \_\_\_\_\_

Is there a current/known history of angry or aggressive behaviour?

☐ Yes ☐ No

Is there a current/known history of wandering?

☐ Yes ☐ No

Are there any other concerns we should be aware of?

☐ Yes ☐ No \_\_\_\_\_

